



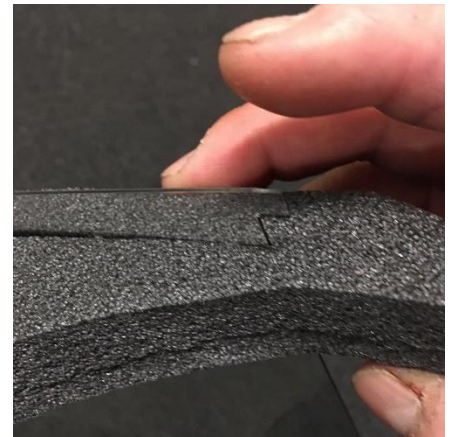
Protective Face Shield



Insert curved edge of face shield into top of foam headband.



Slide face shield through foam headband up to tabs.



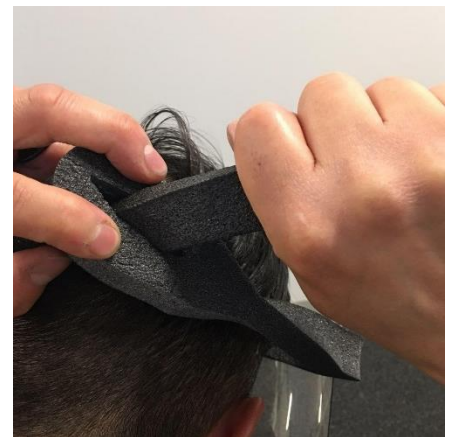
Ensure tabs catch on foam to secure face shield in place.



Open foam eyelet by pressing down on the curved edge.



Insert headband adjustment arm into the open eyelet.



Place on head and pull the adjustment arm until snug.



The assembled face shield should rest comfortably on the head and can be tightened and loosened as needed.



Novation iQ